

FINGERPRINTING



Not much has changed 1972



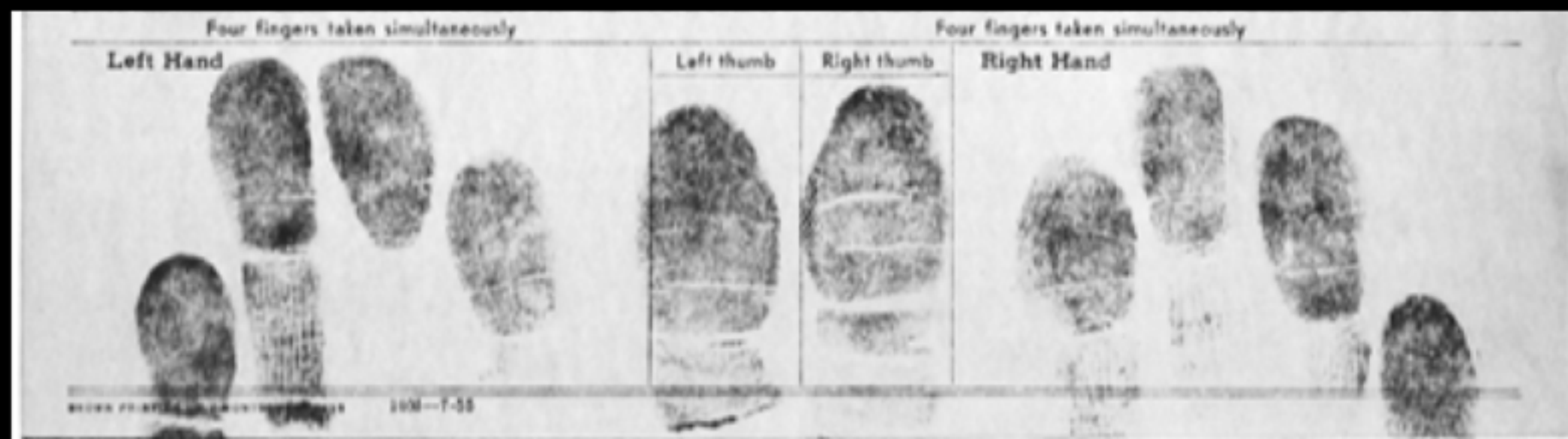


Rolling Prints



10 Print Card

[illegible]



Live Scan-Mobile ID



Equipment

Dust

Brush

Tape

Card

Photograph/Camera

Scale for Photograph

The Process

- We imagine where a suspect touched leaving a possible fragile print
- We use dust and a brush to develop the print to be visible to the human eye
- We lift the print with tape and apply it to a card
- A fingerprint examiner analyzes the print and compares it to possible suspects
- A finger print is entered into AFIS-Automated Fingerprint Identification System



IMPORTANT PRINTS CAN BE THIS SIMPLE



Police work is common sense



**Photograph fingerprint
tape**

FINGERPRINT

is a copy or impression of the ridges and valleys present on the outermost layer of human skin.

Fingerprint is Unique



Perishable and Fragile

They can be wiped away
or
Dry Out



**Fingerprint Examiner analyzes the print structure
and testifies to the ID in court**



Arch



Tentarch



Loop



Double Loop



Pocked loop



Whorl



Mixed



Prints are on the first digit and sides of

- Fingers
- Palms
- Feet
- Toes

Where are prints found





Spent
Casing

Three types of fingerprints

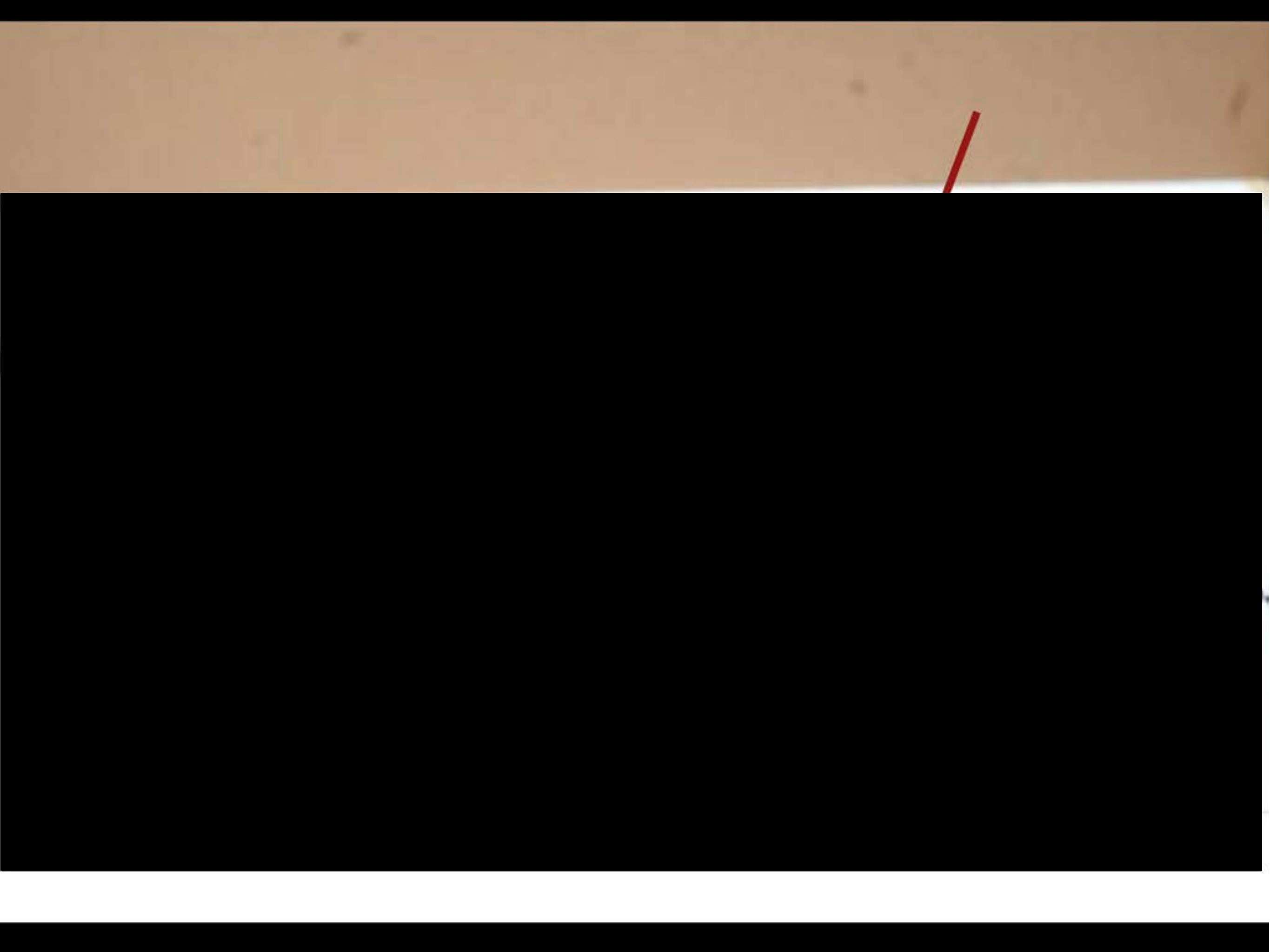
- Visible
- Plastic
- Latent

Plastic-Impression in oil or putty





Visible in Blood
What is ridge detail?



Visible



**Macro Photo
Scale**



**Latent (Invisible)– left by secretions from perspiration
or oils on the skin**





Porous Surface- Wood, paper, styrofoam cup

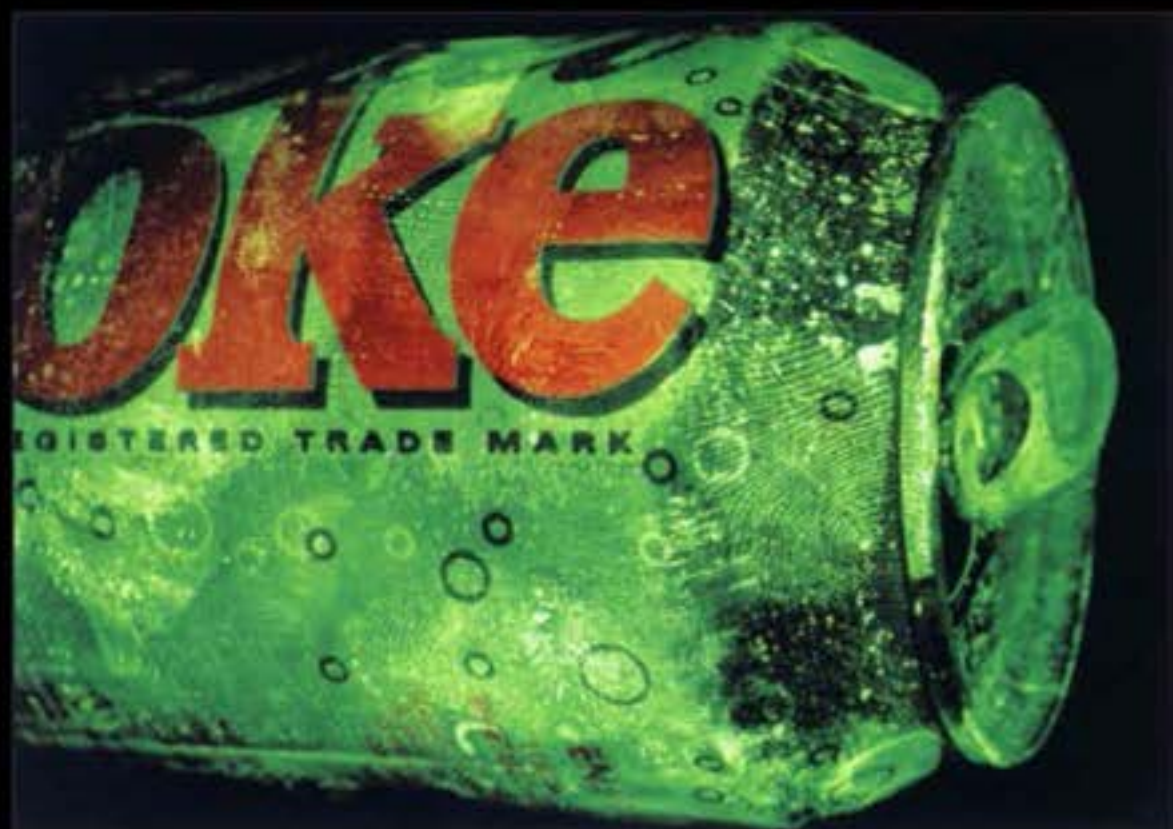
Non-Porous-counter top, glass, steel, magazine cover

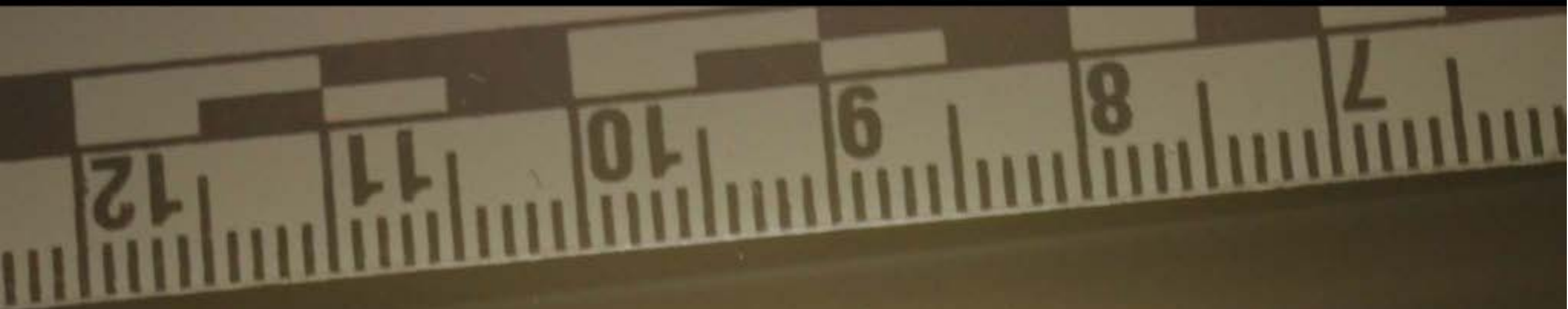
Non-porous - You can use magnetic powder

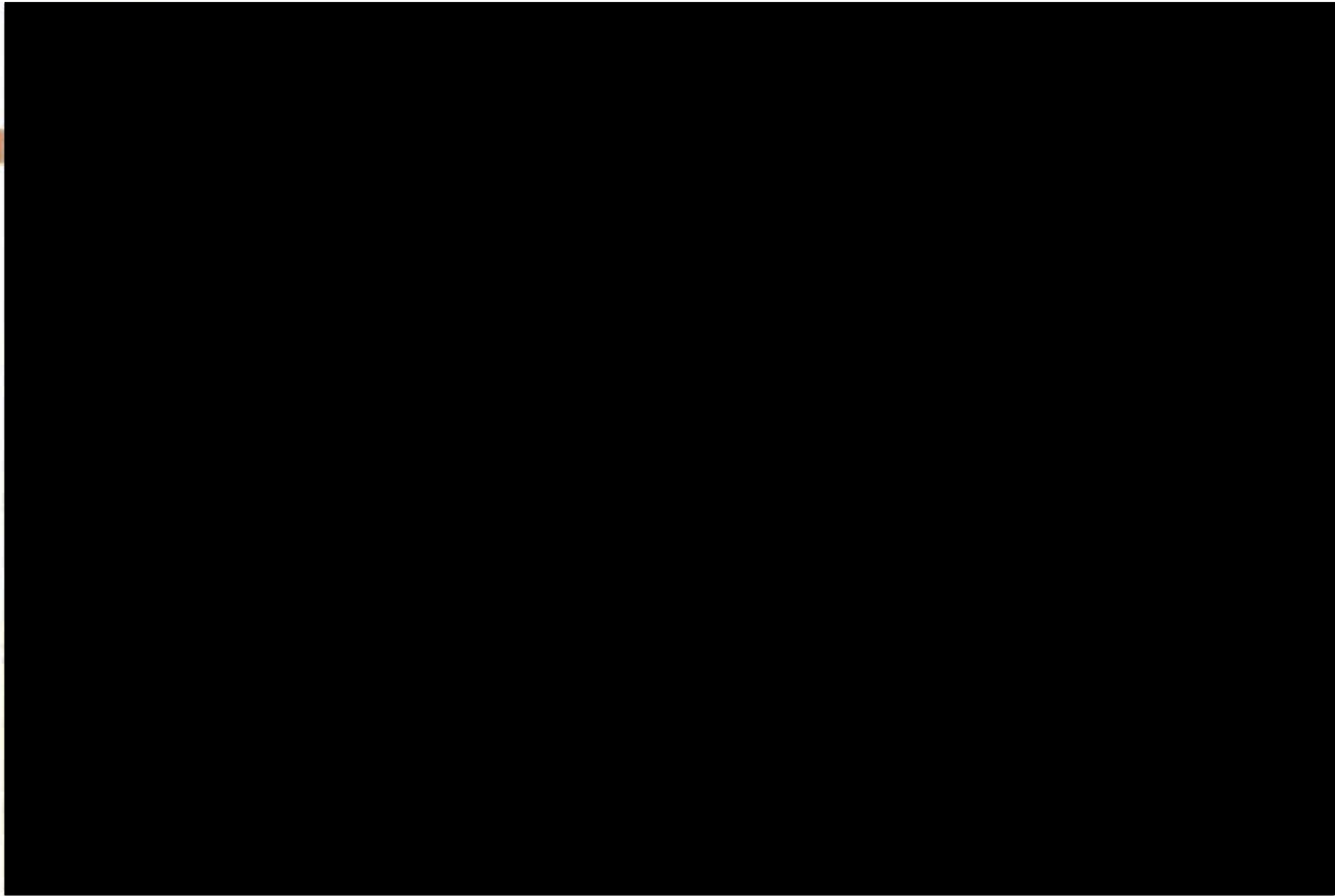


Bank Notes Bad Checks

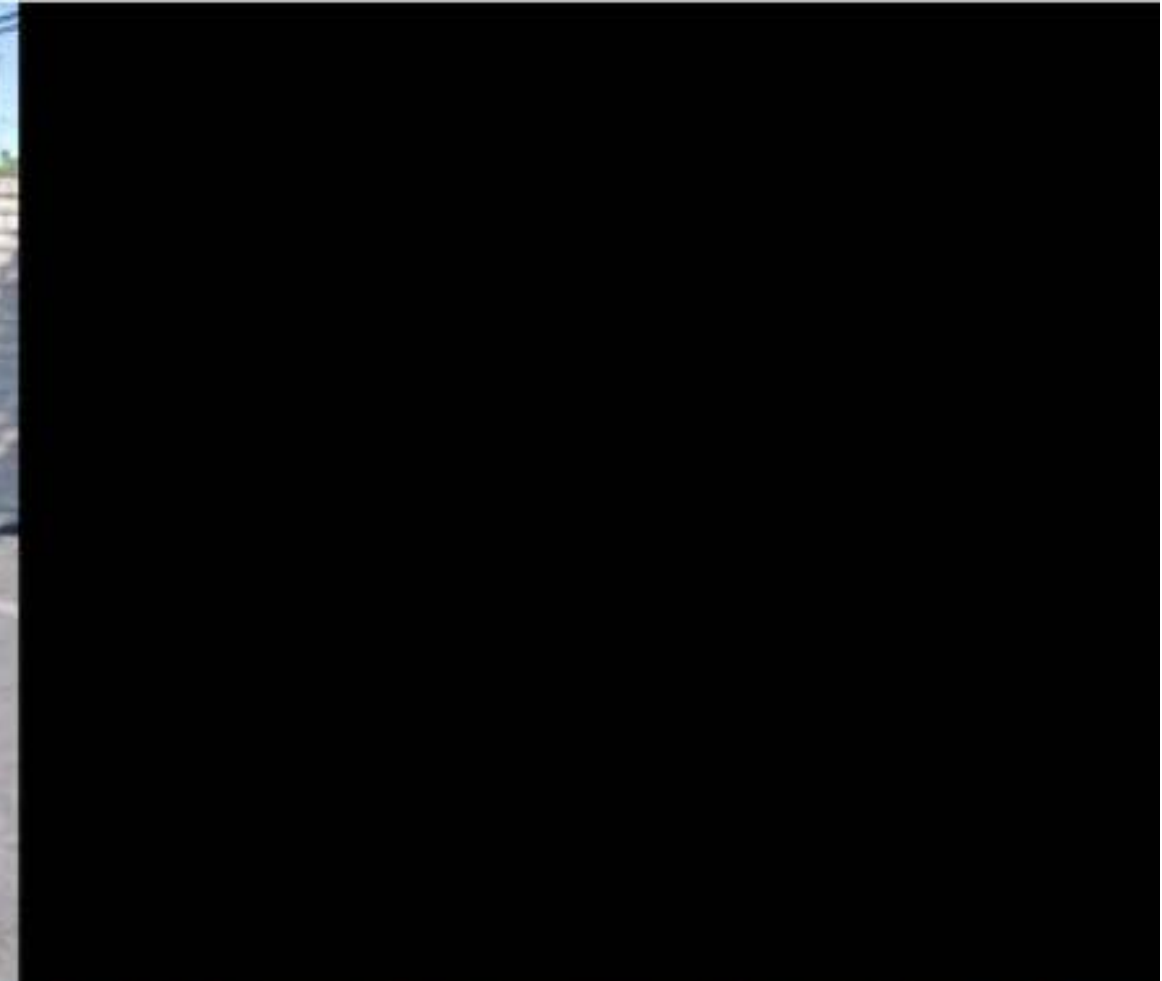












**Photograph 360 degrees
Hit and Run
Stolen Vehicle**





Photograph possible latent prints





Will this tool puncture the ignition?

Fingerprints









CASE # _____

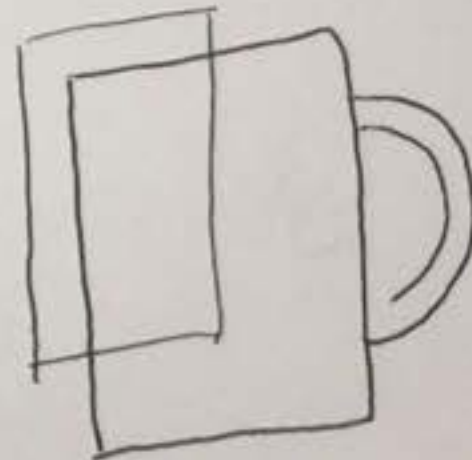
DATE: _____

OFFICER: _____

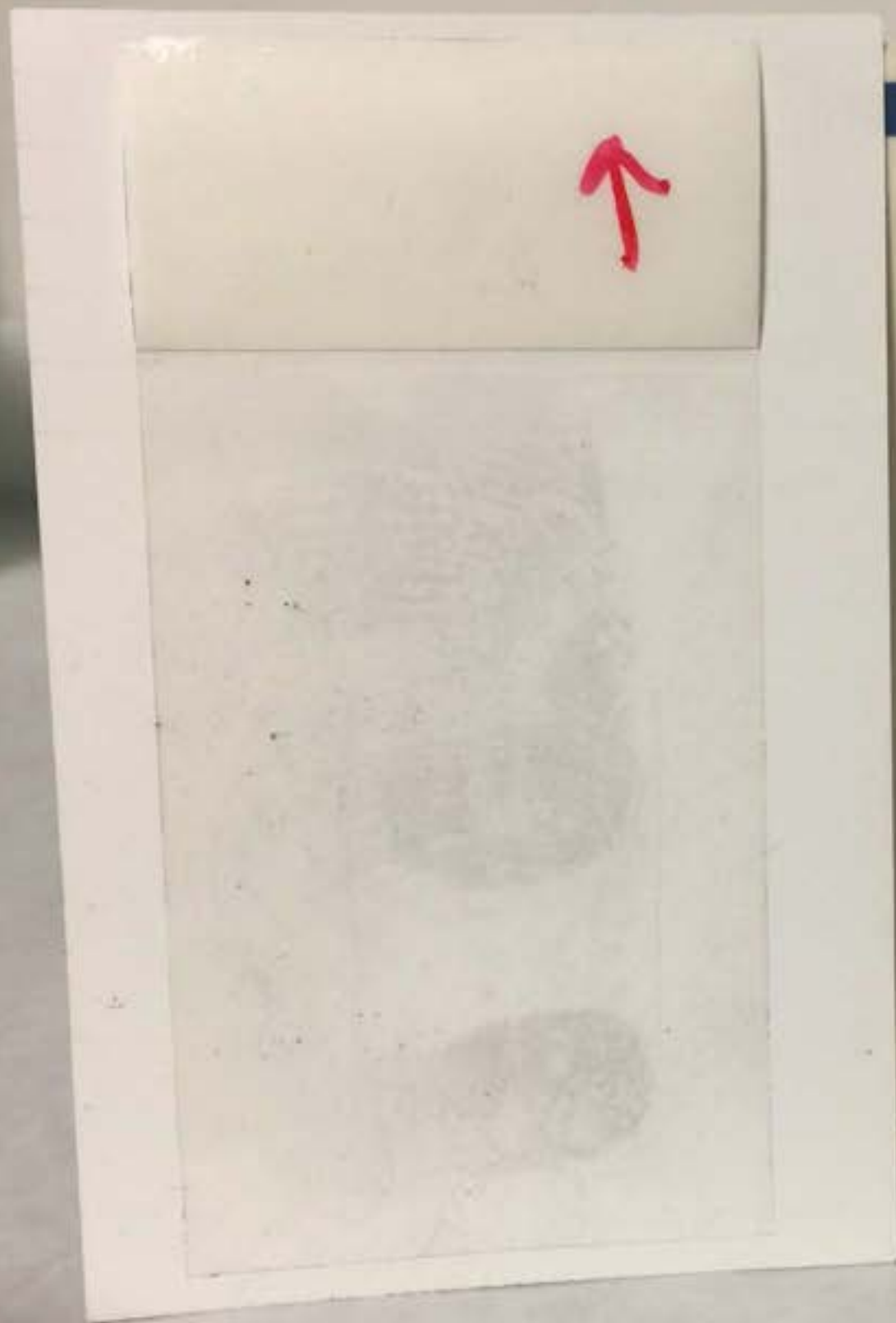
BADGE # _____

OBJECT/LOCATION CUP FACE

DIAGRAM/DESCRIPTION:



FORM 200-10E (Rev. 4/86)



CASE # _____

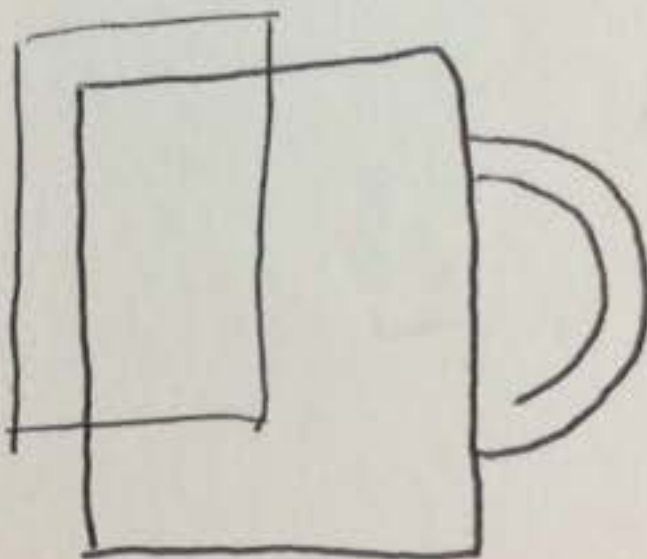
DATE: _____

OFFICER: _____

BADGE # _____

OBJECT/LOCATION CUP FACE

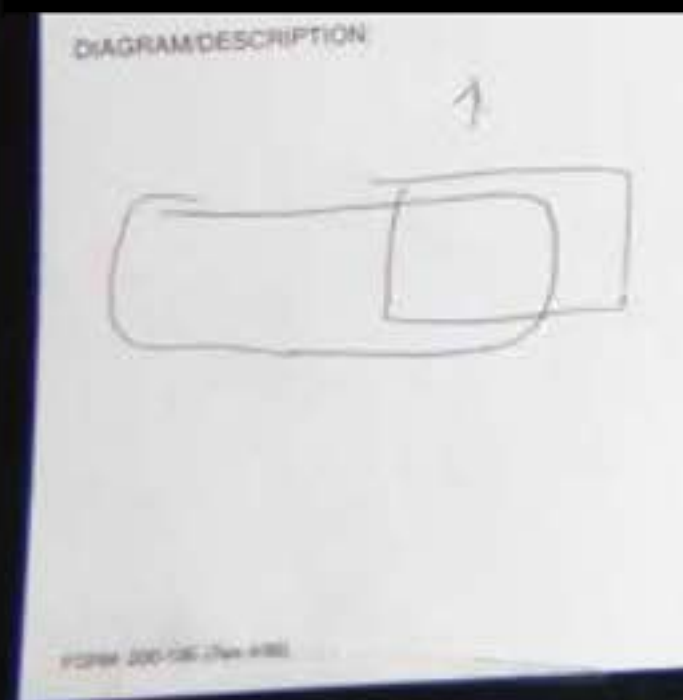
DIAGRAM/DESCRIPTION:





Driver's Door





Print Card Drawings and directional Arrow
indicating UP.
Arrow indicates up on print side